



Project GRAD Newsletter



Project GRAD Lorain 2007-2008 Annual Report

2008 Project GRAD Lorain Scholars are just getting started!

The 100 Project GRAD Lorain Scholars, all graduates of Southview High School are moving on to bright futures. Many of them cite the



help and support they received from GRAD as a key factor in setting their goals high. Hav-

ing been accepted to places from New York University to The Ohio State University; from Case Western Reserve University to Baldwin Wallace; these students move on with big dreams and

strong foundations. Many of the 2008 Scholars, like the 2007 Scholars before them, will begin their college careers right here in Lorain at Lorain County Community College. LCCC welcomes them warmly through the "Reach Scholarship" which allows them to attend their first two years at no charge. This means they receive double the standard GRAD Scholarship in their third and fourth years of higher education (all GRAD Scholars receive up to \$4000, typically \$1000 each year.)

Many of the GRAD scholars have received other scholarship funds, as well, thanks to their efforts and the support of the GRAD

College Access Coordinator, as well as school guidance counselors.

Ensuring that students and their families understand the availability of grants and loans to make college accessible and affordable is a key component of GRAD. The College Access Coordinator works with parents, families, and students to help them navigate through the maze of the FAFSA and the numerous other forms that enable students to receive help in paying for their higher education careers.

Where are they now?

Project GRAD Lorain keeps track of Scholars. In order

(continued on page 3)

Volume 1, Issue 1

September 2008

Special points of interest:

- Project GRAD Annual Report
- Referral Source Chart
- Presenting Problems Chart
- Campus Family Support Chart

Inside this issue:

Project GRAD Annual Report	1
Campus Family Support	1
Referral Source Chart	2
Presenting Problems Chart	2
Summer Institute	3
Moving Forward	4

Campus Family Support

Structured around four parts, Campus Family Support provides needed assistance to students and families.

- Personal and Social Support provided both on an individual and group basis;
- Parental and Family involvement includes "Parent University" and other efforts to help

parents feel more comfortable in the schools and in ways to assist their children and help accessing the Ohio Benefits Bank;

- Career Awareness services which help students understand different careers and help them build the skills necessary to

hold a job;

- Academic support for students in need of remediation and enrichment.

These referrals are for a variety of "presenting problems:" Teachers and other professionals in schools

(continued on page 2)

Referral Source Chart

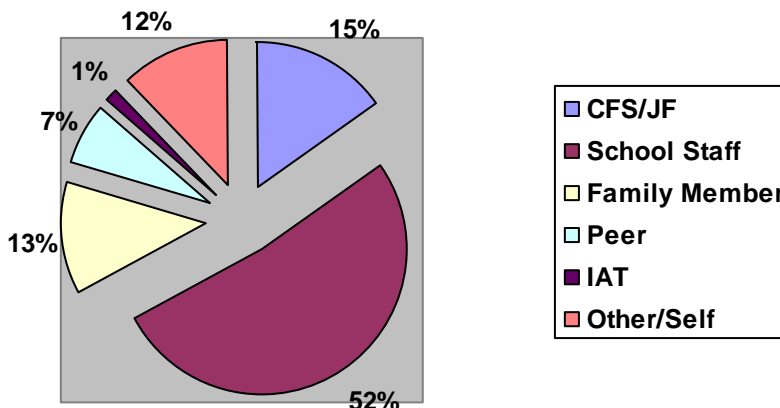


Chart 1

Presenting Problems Chart

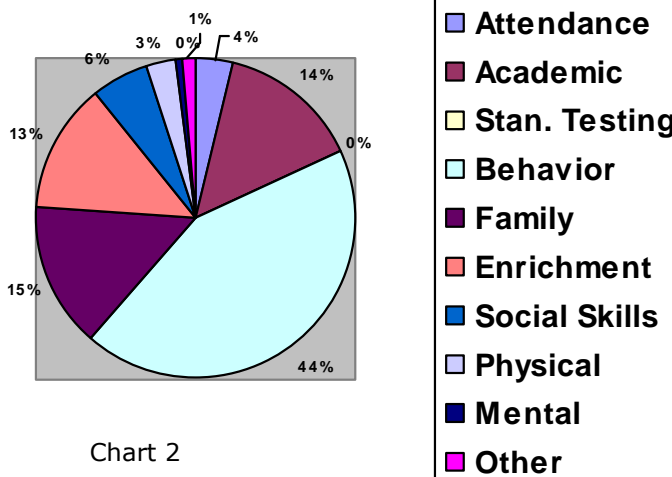


Chart 2

**WALK
FOR
SUCCESS**

**Volunteers
Needed**

**Saturday,
October
4, 2008**

10:00 am

See the website for
more information.

www.projectgradlorain.org

Campus Family Support (con't)



(continued from page 1)

are consistently overwhelmed with the everyday demands placed on them to educate students, enforce discipline, and respond to paperwork requirements. Many students and families require additional supports in order to achieve to their highest potential. That's where GRAD's Campus Family Support comes in to help. During the 2007-2008

school year, Campus Family Support served nearly a thousand families. Referrals occur from multiple sources (Chart 1).

Referrals are for a variety of "presenting problems" (Chart 2).

Nearly 40,000 contacts were made during the course of the 2007-2008 school year, more than 30,000 of which were directly with students. PG

Next Edition:

Project
GRAD
Department
Calendar

Summer Institute

Summer Institute provides fun and function for Juniors and Seniors

What is Summer Institute? Each year, Project GRAD Lorain partners with Lorain County Community College to provide students with a four-week session in which they build academic, social, and career skills. The aca-

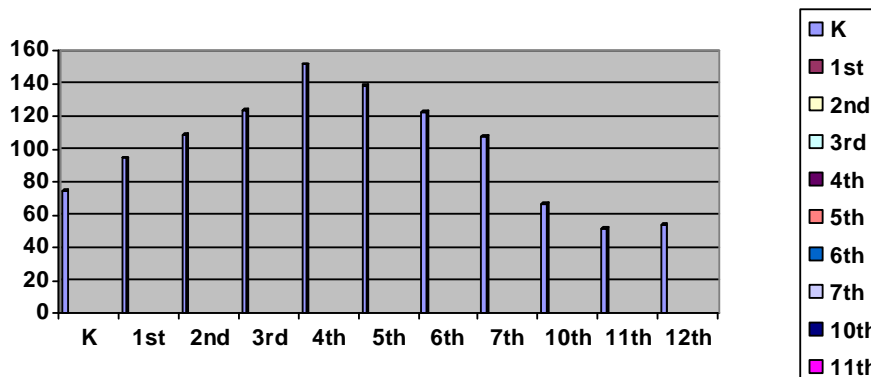
demics focus most heavily on math and literacy skills. Students also participate in college tours, experience hands-on learning about different career paths, and build relationships with mentors who help them build decision-making abilities. Both this year's and last year's Summer Institute's marked significant academic gains in

the four weeks of intensive instruction. Students take an assessment at the beginning and end of the session and the results each year have been impressive. This year, students in Summer Institute achieved great gains in their academics, with the students themselves agreeing that it was a worthwhile and important endeavor. PG



Campus Family Support Provision

Campus Family Support provides services to all grades except Pre-K, 8th and 9th because those services are provided through other sources.



The average GPA of a 2007 Scholar is 3.26.

Annual Report (con't)

(continued from page 1) for Scholars to receive their GRAD scholarships, they must provide copies of their transcripts to demonstrate they are achieving at the appropriate level (a minimum of 2.5 grade point average.) The 2007 Project GRAD Lorain Scholars are achieving well beyond the minimum GPA required. Indeed, the av-

erage GPA of a 2007 Scholar is 3.26. Many of these Scholars are still at LCCC; others are attending Kent State University, Akron University, Ohio University, The Ohio State University, Hiram College, and numerous other institutions of higher learning. *Project GRAD became more than an opportunity to get monetary assistance for college but a chance to*

grow closer to my fellow students and to grow as a person. Project GRAD provided us with the extra motivation and support to keep our GPAs high and make it through what some say are the best years of our lives. –Octavia M. Allen, 2007 GRAD Scholar, Sophomore, Accounting Major, North Carolina A&T State University. PG



Graduation Really Achieves
Dreams



PO Box 25
Lorain, OH 44052
440-277-5157
440-277-5159

...ensuring a quality public school education for all at risk children in economically disadvantaged communities so that high school graduation rates increase and graduates are prepared to enter and be successful in college.

WE'RE ON THE
WEB!

HTTP://
WWW.PROJECTGRAD
LORAIN.ORG



Project GRAD Newsletter
created by Melangé
4D, Dayton, OH •
www.melange4d.com



Moving Forward

More than three quarters of Project GRAD Lorain's budget was spent on program and services, with the remainder covering management, administration, fundraising and outreach. The work put in for fundraising and outreach has paid off and will have a significant impact on the 2008-2009

budget, as well as those budgets moving forward for the next five years. On August 14th, President George W. Bush signed the Higher Education Reauthorization Act into law. Within that law is a provision making Project GRAD a federal program. Each Project GRAD site throughout the country will receive an-

nual funding through the United States Department of Education. Project GRAD Lorain expects to receive more than \$1 million each year. These funds will assist with expansion into the entirety of the Lorain City School District, and fuller implementation of aspects of the GRAD model. PG



The Project GRAD Lorain Newsletter is published on a bi-monthly basis. Please contact the Project GRAD Lorain office if you would like to submit information to be considered for the newsletter.

All requests and comments should be forwarded to
mrsjackson.projectgrad@gmail.com

From the Director's Desk

As Director, I am pleased to share some recent and exciting happenings in Project GRAD Lorain. We have concluded an exciting summer and anticipate great things in this new academic year.

Several new initiatives will be presented including this new eNewsletter. Each edition will contain important information and updates. We are also pleased to launch an updated website [www.projectgradlorain](http://www.projectgradlorain.org)

[.org](http://www.projectgradlorain.org) which should enable us to continue to promote Project GRAD Lorain's many offerings to our students and community.

Mrs. Latoya Cover-Jackson

